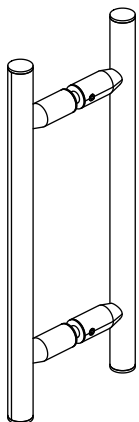


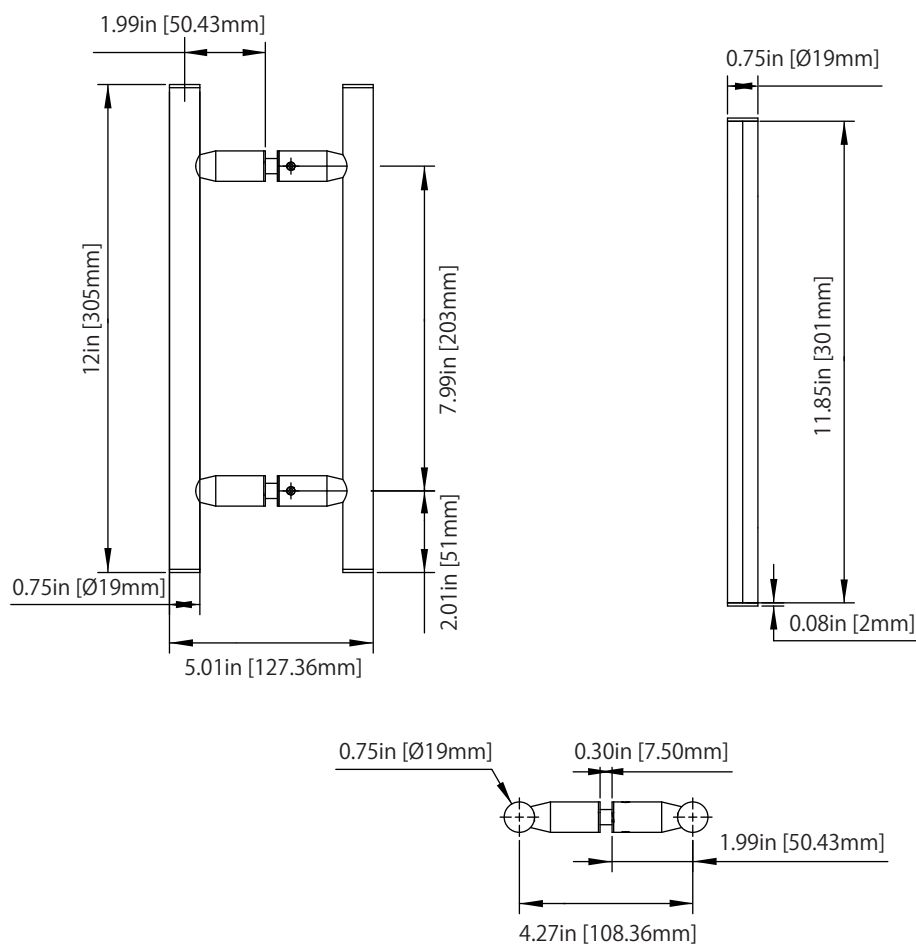
## SDH.1050 | 8" Ladder Frame Handle



### SPECIFICATIONS:

- Solid Brass construction
- Fits 3/8" to 1/2" Thick Glass
- Mounting Centre to Centre: 8"
- Handle Thickness: 19mm

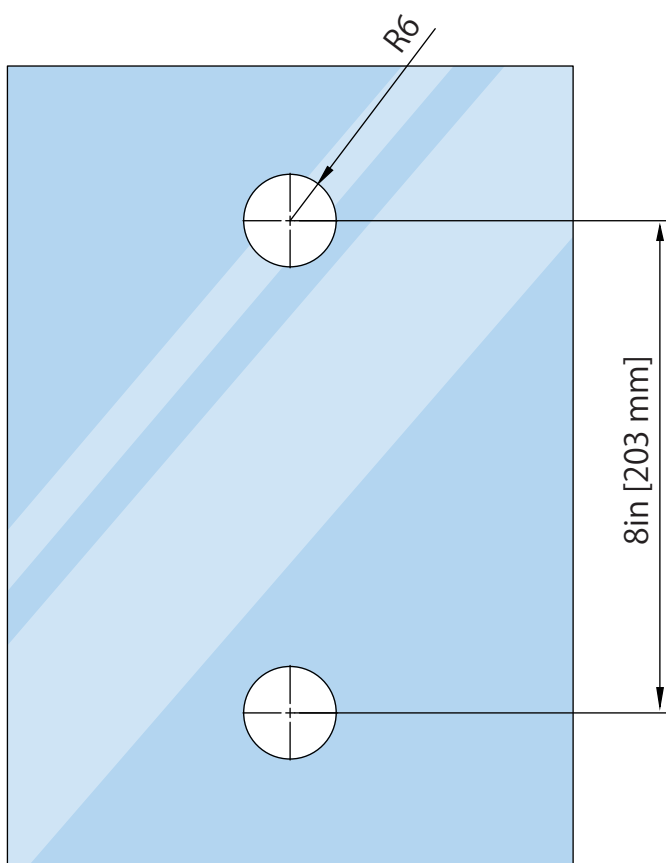
### Technical Diagram



**GLASS CUTOUT DETAILS**

8" Ladder Frame Handle

Item No: SDH.1050



Tolerance :  $\pm 0.1$   
Glass Thickness: 3/8in [ $\sim 10$ mm] to 1/2in [ $\sim 12$ mm]

**CARE & CLEANING GUIDELINES:**

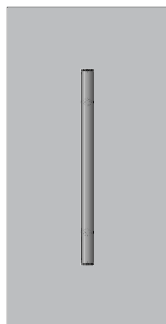
For optimal maintenance of your shower door hardware, adhere to the following guidelines:

- Regularly dry your shower door with a soft towel or cloth to preserve its original finish.
- Avoid using harsh cleaners or chemicals on the hardware, as the components may be coated with a clear lacquer that can incur irreparable damage.
- Prior to cleaning the entire hardware surface, conduct a patch test with your chosen cleaning solution in an inconspicuous area.
- Clean surfaces with a soft, dampened cloth or sponge, and thoroughly rinse with warm water after applying a small amount of gentle cleaning solution.
- Under no circumstances should abrasive products, sponges, or wire scrub brushes be used during the cleaning process.

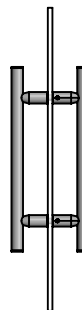
**MAINTENANCE :**

- Hinges are supplied pre-greased at the factory to ensure a quiet and trouble-free operation.
- Should any squeaking become noticeable post-installation, it is advisable to apply a few drops of multi-purpose oil to the hinge, specifically at the nylon washer/pivot location. This lubricant will effectively permeate the hinge crevices, reducing friction and removing any accumulated grime or debris.
- Please refrain from using spray lubricants. In the event that the hinge needs to be disassembled for maintenance purposes, a small amount of white lithium grease should be applied to lubricate the interior hinge components.

**FRONT VIEW**



**SIDE VIEW**



**FIT REPRESENTATION**

